

CONCRETE VAULT TOILETS BY
MISSOULA CONCRETE

8012 Deschamps Ln,
Missoula, MT 59808
(406) 549-9682

UNIT SIZES → FLOOR PLANS → DESIGN FLEXIBILITY

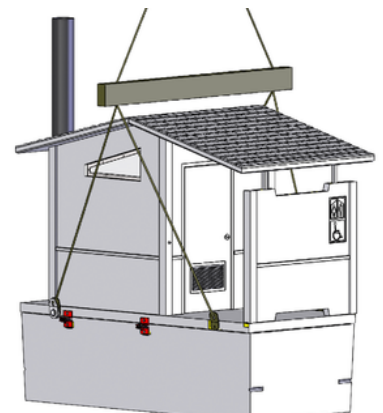
Precast Vault Concrete Toilets

Vault concrete toilets by Missoula Concrete Construction are the gold standard for waterless sanitation in remote, high-traffic, and environmentally sensitive locations. Engineered for long-term performance, these structures offer unmatched durability, low maintenance, and dependable function no matter the setting.

SINGLE UNIT FACILITIES

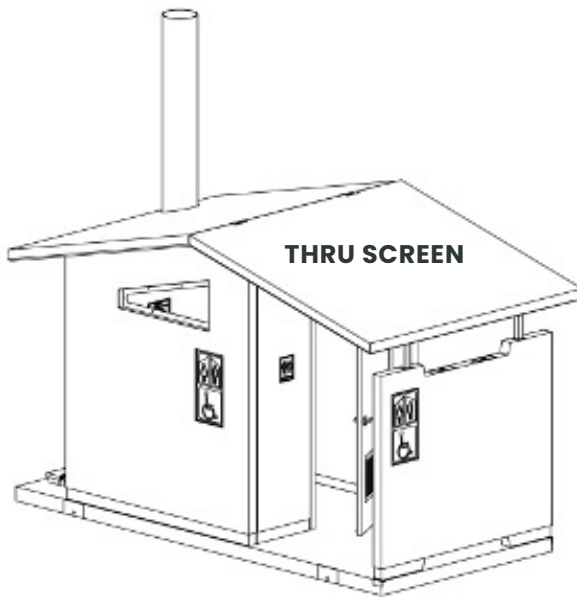
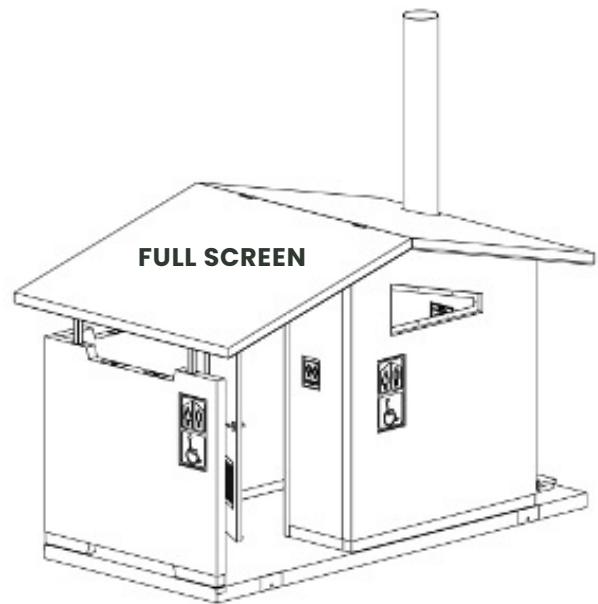
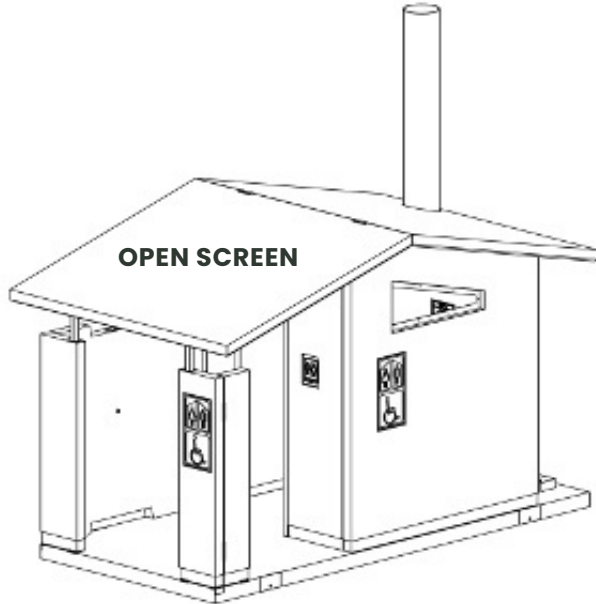


- Single use facility
- 6' 6" x 14' 8"
- (1) 1,000 gallon vault
- ADA compliant
- Waste cleanout
- Sweet Smelling Technology®
- Durable concrete building



SINGLE UNIT LAYOUT AND PRIVACY SCREEN OPTIONS

6' 6" x 14' 8"



CUSTOMIZABLE DESIGN FLEXIBILITY FOR SINGLE UNITS [View the Design Guide](#)



DOUBLE UNIT FACILITIES



- Double use facility
- 13' 8" x 14' 8"
- 13' 8" x 16' 4" (with chase)
- (2) 1,000 gallon vault
- ADA compliant
- Waste cleanout
- Sweet Smelling Technology®
- Durable, concrete building



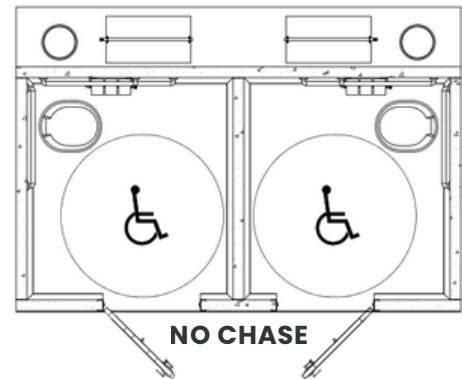
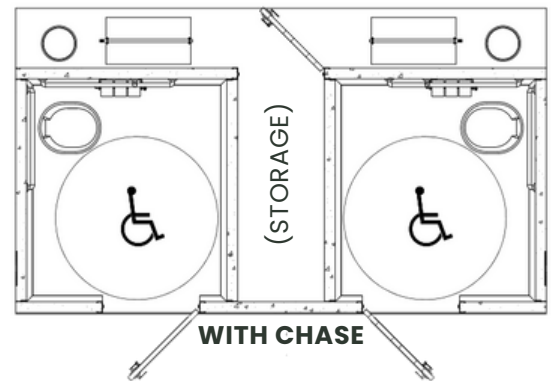
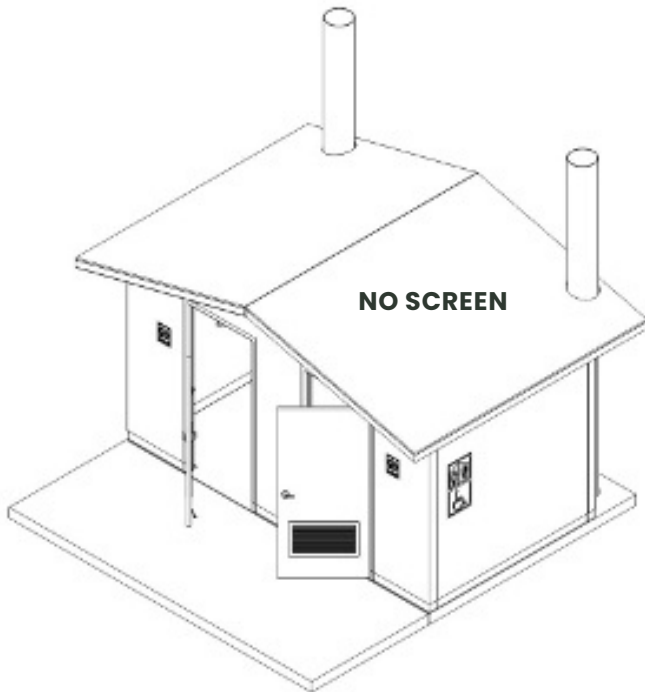
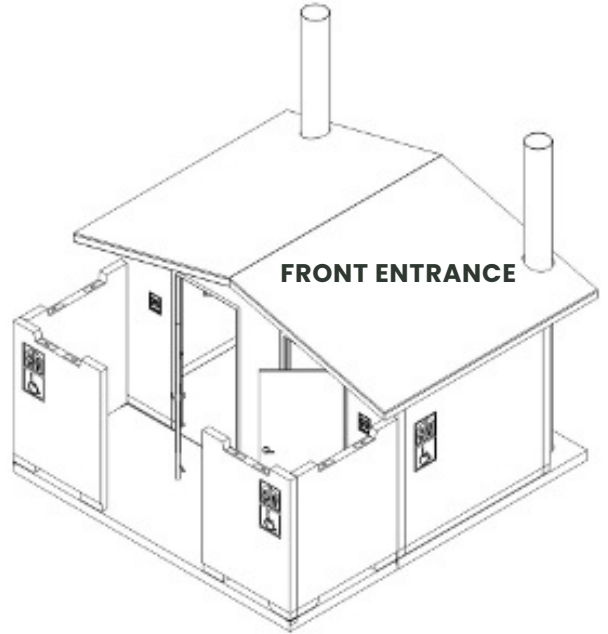
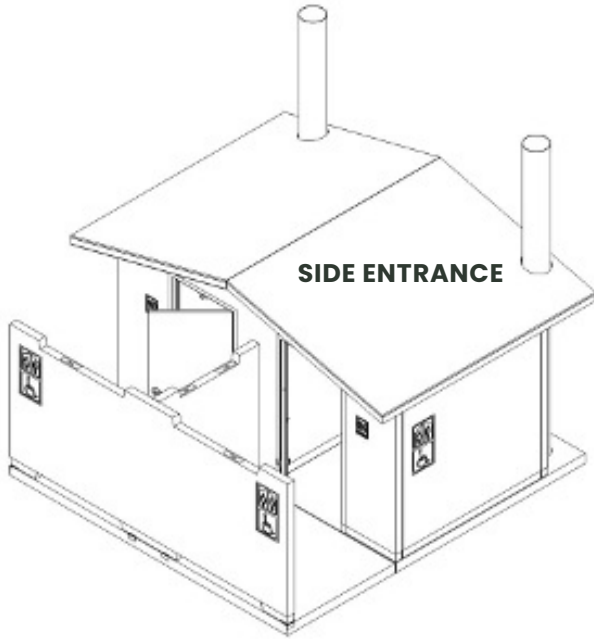
CUSTOMIZABLE DESIGN FLEXIBILITY FOR DOUBLE UNITS [View the Design Guide](#)



DOUBLE UNIT LAYOUT AND PRIVACY SCREEN OPTIONS

13' 8" x 14' 8" (STANDARD)

13' 8" x 16' 4" (WITH CHASE)





**MISSOULA
CONCRETE
construction**

Main Office
406.549.9682
Missoula, MT



8012 Deschamps Ln,
Missoula, MT 59808
(406) 549-9682

PREFABRICATED → READY TO INSTALL → READY TO USE

Fast, Easy Installation

At Missoula Concrete Construction we have an excellent installation team and the process takes very little time. View the [excavation specifications](#) for information on how to prepare the job site. A concrete vault is installed in the ground and a Butyl rubber seal is used to secure the building on top of the vault.

Delivered Ready to Install, Built to Last



Precast Concrete Durability

Our concrete buildings are prestressed with high-tensile strength (270 ksi+) 7-wire, steel strands that are pretensioned and cast into the concrete. The combination of durable concrete and high-strength steel results in reduced cracks, increased load carrying capacity, and a long life span.

- ✓ **Extreme Environmental Resistance**
- ✓ **Vandal and Fire Resistance**
- ✓ **Pest-Proof & Rot-Free**
- ✓ **Minimal Maintenance**



Odor-Reducing Technology

Our buildings feature an odor-reducing ventilation system that uses passive airflow and vent pipes to draw odors up and away from vault toilets, creating an odor-free environment in parks and remote areas. An optional solar fan is also available for additional odor control.

GSA Multiple Award Schedule Contract

GSA Contract Number: 47QSWA18D0041
SIN's Offered: 36-10H & 361-32
DUNS: 079712352
Cage Code: 1RL31
NAICS: 238120, 327390
Montana Contractor Registration: 12255
BC Concrete dba. Missoula Concrete Construction

Sales & Logistics

Jaclyn Roeske
jroeske@missoulaconcrete.com

406.203.9991

MISSOULA CONCRETE.COM

